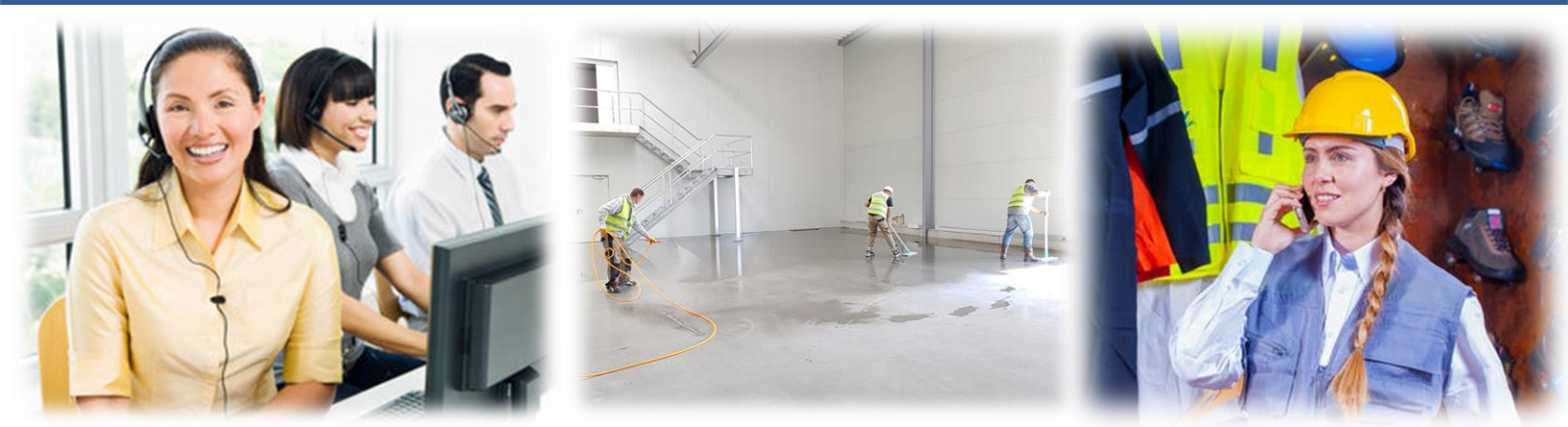


Now Hiring!

Immediate openings in Shasta, Trinity and Humboldt Counties for temporary, full-time work to help our community recover from the effects of COVID-19, including Shelter In Place.



TEMPORARY JOBS AVAILABLE! \$14.00 - \$22.00+/hour

Types of Jobs Available:

- Cleaning and sanitization of public buildings and spaces
- Call Center Specialists to answer public questions
- Delivery of food to at-risk individuals

To Qualify:

- Must be 18 years of age or older
- Able to pass drug screening (some sites require background check) AND
- Have been laid off due to the effects of COVID-19 OR
- Have been unemployed for at least 15 weeks OR
- Self-employed currently unemployed due to the effects of COVID-19

To find out if you qualify:

530-245-1530 or jobhelp@thesmartcenter.biz



Smart Business Resource Center is an equal opportunity employer.

Auxiliary aids and services are available to individuals with disabilities. TTY 530-245-1566

Now Hiring!

Maintenance/Repair Workers and Laborers



TEMPORARY JOBS AVAILABLE! \$15.16 - \$24.89+/hour

Immediate openings in Shasta County for temporary, full-time work to clean up and repair damage created by fires and storms.

To Qualify:

- Must be 18 years of age or older
- Must be receiving or have recently exhausted unemployment insurance
- OR
- Have been unemployed more than 15 of the previous 26 weeks

To find out if you qualify:
Call 530-245-1530



Smart Business Resource Center is an equal opportunity employer.

Auxiliary aids and services are available to individuals with disabilities. TTY 530-245-1566



COVID-19

FINANCIAL ASSISTANCE AVAILABLE

DO YOU MEET ONE OF THE FOLLOWING CRITERIA?

- ❖ I was laid off due to actual COVID 19 **OR**
 - ❖ I am experiencing a reduction in hours and/or pay due to COVID-19 **OR**
 - ❖ I am unable to work due to COVID-19 because of **ONE** of the reasons listed below:
 - I was quarantined
 - I was a caregiver for someone who was subject to quarantine
 - I needed to care for children because of school closures or child-care provider closure
 - I was at a high risk of getting seriously ill from COVID-19 or I live with someone at high risk
 - I was required to telework but lacked the necessary equipment
-

To Participate in the Supportive Service Program

YOU MUST:



Be at least 18 years of age



Meet the Covid-19 eligibility requirements above

**Please call the Smart Center today
to see if you qualify!
530-245-1530**